



Purlin Fastener

PRODUCT DATA SPECIFICATIONS

PRODUCT DESCRIPTION

The OMG Purlin Fastener is designed for attaching single-ply membrane systems to 12–18 Ga. (2.8–1.25 mm) structural steel purlins in standing seam metal roof retrofit applications.

The OMG Purlin Fastener has a 3/4-in. (20 mm) drill point which allows the screw to quickly drill through the purlin before the threads engage into the standing seam metal roof. This greatly reduces point burn-out or breakage and eliminates “jacking” between purlin and standing seam metal.

The OMG Purlin Fastener is available in lengths from 3 3/4-in. to 8-in. (95 to 200 mm).

The OMG Purlin Fastener is Factory Mutual and Miami-Dade County Approved.

FEATURES & BENEFITS

- The OMG Purlin Fastener drills through steel up to 12 Ga. (2.8 mm) in seconds.
- The 3/4-in. (20 mm) drill point allows the fastener to be drilled through the purlin before the threads engage into the standing seam metal roof.
- Low profile hex head has a smooth surface to ensure that there is no damage to the membrane.
- FM and Miami-Dade County Approved.

COATING

OMG CR-10 corrosion resistant coating passes the corrosion requirements of FM Approval Standard 4470 and ETAG 006.

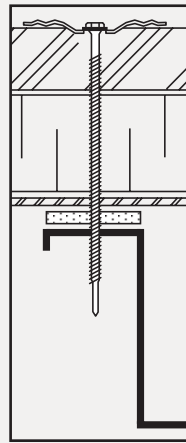
APPLICATION

The OMG Purlin Fastener must penetrate the purlin a minimum of 1-in. (25 mm). This ensures a minimum of 1/4-in. (6 mm) thread penetration into the structural member.

Using a screw gun with a maximum of 1800 RPM, drive the fastener through the purlin until a slight depression is seen around the plate.

Note: Caution should be taken not to overdrive the fastener causing stress plate surface to deflect more than 1/16-in. (1.6 mm).

Prior to job bid, contact OMG to visit the job site and inspect the deck.



PLATES & ACCESSORIES

Use 2-in. (50 mm) appropriate stress plate.

For best installation results, use a high torque, low RPM screw gun with a maximum of 1800 RPM.

APPROVALS



Factory Mutual listings refer to this product as **OMG Purlin**.



USE WITH **P** DECK TYPES

PHYSICAL DATA*

The data below is constant for each OMG Purlin Fastener.

HEAD		THREAD
1/4" (6 mm) Hex .435" (11.04 mm) Diameter	.210" (5.33 mm) Diameter	
SHANK		COATING
.170" (4.31 mm) Diameter		CR-10

ORDERING INFORMATION

CAT. NO.	LENGTH IN (MM)	THREAD IN (MM)	PKG QTY	WEIGHT LBS (KG)
PUR334	3 3/4 (95)	Full	500	13 (5.90)
PUR434	4 3/4 (120)	3 (76)	500	16 (7.26)
PUR534	5 3/4 (145)	3 (76)	500	20 (9.08)
PUR700	7 (175)	3 (76)	500	24 (10.89)
PUR800	8 (200)	3 (76)	500	27 (12.25)

Each OMG Purlin Fastener has a 3/4-in. (20 mm) drill point. Therefore, the effective fastening length is 3/4-in. (20 mm) less than actual length.

*All sizes are nominal.

KEY:

- S** Steel
- W** Wood
- G** Gypsum
- P** Purlins
- SC** Structural Concrete
- LC** Lightweight Concrete
- LWIC** Lightweight Insulating Concrete
- CWF** Cementitious Wood Fiber



Purlin Fastener

PRODUCT DATA SPECIFICATIONS

SPECIFICATION

The fastener will be an OMG Purlin Fastener with a nominal shank diameter of .170-in. (4.31 mm) and a thread diameter of .210-in. (5.33 mm). The OMG Purlin Fastener will be used with a Factory Mutual approved OMG 2-in. (50 mm) round pressure plate or batten bar. The fastener must be Factory Mutual approved.

APPLICATION

Using a screw gun with a maximum of 1800 RPM, drive the OMG Purlin Fastener into the purlin until a slight depression is seen around the plate. The OMG Purlin Fastener must penetrate through the purlin a minimum of 1-in. (25 mm).

Note: Caution should be taken not to overdrive the fastener causing the stress plate to deflect more than 1/16-in. (1.6 mm).

Prior to job bid, contact OMG to visit the job site and test the fastener.

PHYSICAL DATA*

The data below is constant for each OMG Purlin Fastener.

HEAD	THREAD
¼" (6 mm) Hex .435" (11.04 mm) Diameter	.210" (5.33 mm) Diameter 16 T.P.I.
SHANK	COATING
.170" (4.31 mm) Diameter	CR-10
	PACKAGING
	500/carton

*All sizes are nominal.

PURLIN FASTENER LENGTH SELECTION PROCEDURE

PURLIN FASTENER LENGTH IN (MM)	COMBINED THICKNESS OF MEMBRANE AND/OR EXISTING SUBSTRATE	
	USABLE LENGTH IN (MM)	MAX. TOTAL THICKNESS IN (MM)
3¾ (95)	3 (75)	2¾ (70)
4¾ (120)	4 (100)	3¾ (95)
5¾ (145)	5 (125)	4¾ (121)
7 (175)	6¾ (160)	6 (152)
8 (200)	7¾ (185)	7 (178)



ROOFING PRODUCTS

153 BOWLES ROAD, AGAWAM, MA 01001 USA
800-633-3800 413-789-0252 OMGROOFING.COM

Copyright © 2018 OMG, Inc. All rights reserved.

Superior productivity.
Superior performance.

