



TerminEdge™ EX MB for Modified Bitumen and BUR Applications.

PRODUCT DATA SPECIFICATIONS

PRODUCT DESCRIPTION

OMG's extruded snap-on fascia for BUR and modified bitumen roofing applications. TerminEdge EX MB provides superior protection from wind and water penetration.

FEATURES & BENEFITS

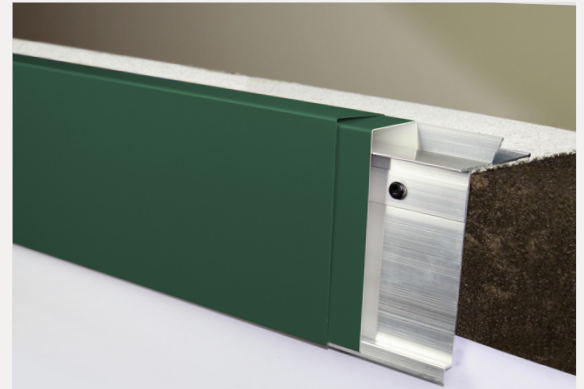
- Extruded aluminum retainer has an elongated base flange which mitigates peel-back of BUR and modified roofing plies.
- Retainers are self-locating with pre-punched slots to accommodate thermal expansion and contraction and reduce installation time.
- Standard sizes are 3.75-in., 5.25-in., 6.75-in. and 8.25-in.
- ANSI/SPRI/FM-4435 ES-1 Tested and FM Approved.

ANSI/SPRI/FM 4435
/ES-1 TESTED



- Warranted in wind conditions up to 155 MPH with a 25-year, Category 5 Warranty.

CATEGORY **5** WARRANTY

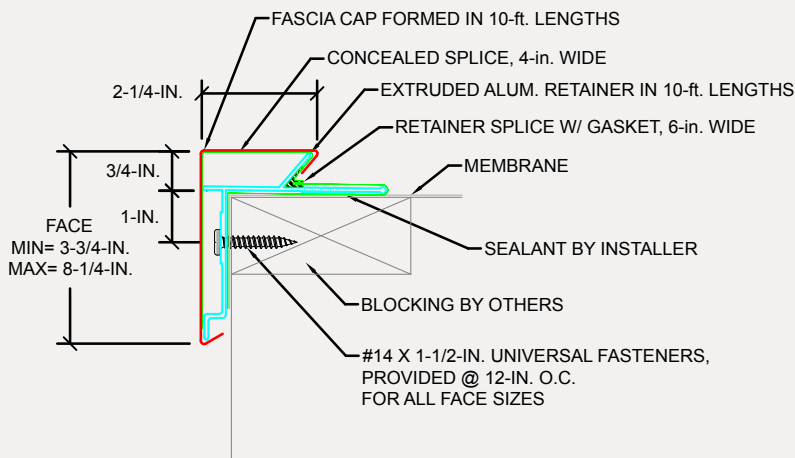


SIZES AND MATERIALS

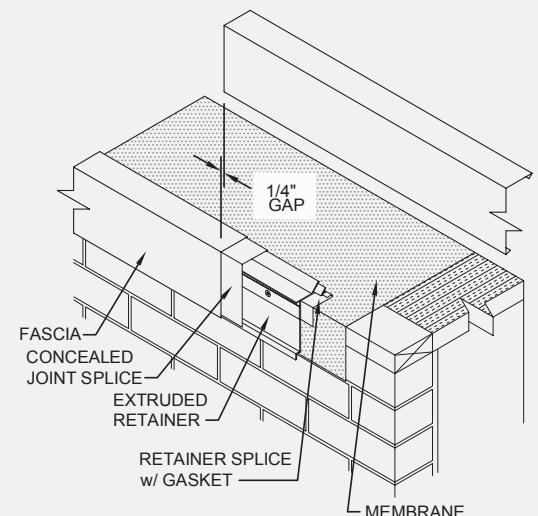
STANDARD FASCIA SIZES	FACE HEIGHT IN	GAUGE	NAILERS* COVERED
TEX MB 375	3.75	Extruded Aluminum Retainer	1
TEX MB 525	5.25		2
TEX MB 675	6.75		3
TEX MB 825	8.25		4

- Sizes range from 3.75- to 8.25-inches.
- All sizes are available in several options including:
 - 24 and 22 Ga Kynar 500-coated galvanized steel
 - .040-, .050- and .063-inch aluminum
 - 24 and 22 Ga stainless steel
- In addition, all TerminEdge products are available in a wide variety of standard colors and finishes as well as custom colors to match your specific requirements.

ANSI/SPRI/FM4435/ES-1 TEST PRESSURES UP TO 260 PSF (HORIZONTAL)



PRE-DRILL WITH 3/16-IN. DRILL BIT FOR MASONRY CONDITIONS.
CONTACT OMG FOR APPROPRIATE RECOMMENDATIONS NEEDED TO MEET/EXCEED ANSI/SPRI/FM4435/ES-1 DESIGN CRITERIA





TerminEdge™ EX MB for Modified Bitumen and BUR Applications.

INSTALLATION PROCEDURE

SPECIFICATIONS (short form)

Low profile roof edge for built-up or modified bitumen roofing.

TerminEdge EX MB fascia shall be a formed metal cover with an extruded retainer.

DESCRIPTION

TerminEdge EX MB is a three-part assembly with an extruded retainer, a decorative snap-on fascia cover with matching splice plate, for use on built-up or modified bitumen roofing.

The fascia cap is available in 24 and 22 Ga Kynar 500® coated galvanized steel, .040-in. (1 mm), .050-in. (1.25 mm) and .063-in. (1.60 mm) aluminum, and 24 and 22 Ga stainless steel. Extruded base will be .100-in. extruded aluminum with self-locating, pre-punched, slotted holes for fasteners at 12-in. (304.8 mm) on center and supplied in standard 10-ft. (3.04 m) lengths.

INSTALLATION PROCEDURES

This is a general outline. Refer to our full installation guide for details.

Preparation:

The roof edge must be level and wood nailers must be straight. Install the roofing according to the manufacturer's instructions. The edge of the membrane should extend over the face of the building approximately and be secured by the retainer or as required by the membrane manufacturer. Before the extruded retainer is installed, apply a continuous bead of the roof manufacturer's water cut-off sealant to the bottom side of the retainer. Install a retainer splice with rubber trim onto the extruded retainer. Secure the retainer using OMG's #14 Universal Fasteners for wood, metal and masonry.

Locate the fasteners in the pre-punched holes as required. Unless otherwise specified, fasteners should be located every 12-in. (304.8 mm) on center in 10-ft. (3.04 m) standard lengths. Install fasteners into each of the pre-punched holes. Hook the joint splice from the top and allow it to hang down the face of the retainer. Install fascia by hooking the back flange over the top of the retainer. Snap the fascia on by pushing down firmly on the leading edge until bottom snaps under the drip edge of the retainer. Leave a 1/4- in. gap at each joint to allow for thermal movement. Coordinate with membrane manufacturer before starting installation.

FINISHES

- Mill aluminum
- Pre-Finished Kynar 500 from the manufacturer's standard color chart
- Premium pre-finished Kynar 500 from the manufacturer's color chart
- Post-Finished Kynar 500
- Pre-Finished anodized aluminum – clear, bronze or black
- Post-Finished anodized aluminum

Custom colors are also available. Contact OMG EdgeSystems for details.

GUARANTEE

A. Warranted materials shall be free of defects in material and workmanship for five years after shipment. If, after inspection, the manufacturer agrees that materials are defective, the manufacturer shall at their option repair or replace them.

B. Manufacturer shall guarantee that the roof edge system, when installed per manufacturer's

instructions, will not blow off, leak, or cause membrane failure, even in wind conditions up to 155 MPH, or the manufacturer shall replace or repair its materials.



C. Decorative Finish Warranty

- 30 year, pre-finished Kynar 500 warranty
- 20 year, pre-finished Kynar 500 warranty

QUALITY ASSURANCE

The fascia product shall be listed in the current Factory Mutual Research Corporation Approval Guide tested per ANSI/SPRI/FM 4435/ES-1 Test Method RE-2 Pull-Off test for fascia. Fascia shall be certified by the manufacturer to design pressures as indicated in current edition of Wind Resistance Standard for Edge Systems Used with Low Slope Roofing Systems.

TECHNICAL SERVICES

Shop drawings are available from the factory. Product samples, detail sheets, color chips and color charts are ready for your submittal package. Long form specifications and CAD details are available on our website. For personal assistance with questions or submittals, contact your OMG local representative.



4 COMMERCE WAY, ARDEN NC 28704 USA
800-892-9173 828-676-1700 OMGROOFING.COM

Copyright © 2020 OMG, Inc. All rights reserved.

Superior productivity.
Superior performance.

