



Scupper RetroDrain

PRODUCT DATA SPECIFICATIONS

PRODUCT DESCRIPTION

Designed for existing through-wall/side-wall or scupper drainage pipes, the aluminum and stainless steel drain components provide durability and compatibility with single ply, BUR and modified bitumen roofing systems. A metal clamping assembly creates a compression type termination in both vertical and horizontal wall flashings. The Scupper RetroDrain features the proven U-Flow Mechanical Seal for attachment to PVC or cast iron leader pipes. Available in 75-, 100-, 125-, and 150 mm sizes (3-in., 4-in., 5-in. and 6-in.). Custom configurations are also available.

FEATURES & BENEFITS

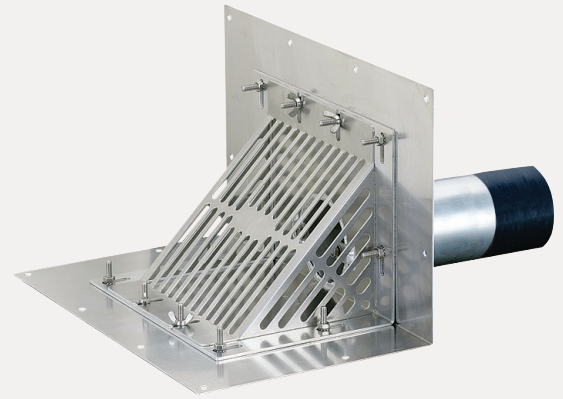
- Pre-punched drain flange provides stable attachment to the wall and roof deck.
- Incorporates the original U-Flow Mechanical Seal which exceeds the ANSI/SPRI Standard for back-flow pressure.
- 3.2 mm (0.125-in.) metal clamping ring assembly provides a compression type termination for the vertical and horizontal roof flashings. Stainless steel studs and lock nuts secure the clamping ring assembly to the drain flange.
- 1.5 mm (.060-in) thick drain strainer is easily secured to the drain body with four stainless steel wing nuts and provides protection against rooftop debris.
- Simple and easy to install, saving the contractor time and money.

APPLICATION

OlyFlow® RetroDrains are designed to replace existing drains in reroofing applications. Installed from the roof surface, OlyFlow RetroDrains are engineered to be installed without removing the existing plumbing or fixture while providing a watertight connection to the roof system and the existing plumbing.

APPROVALS & STANDARDS

ANSI/SPRI RD-1 is a national performance standard for retrofit roof drains. While most retrofit drains are not tested to this standard, OlyFlow Insert Drains – including the Scupper RetroDrain – exceed the standard, which requires that the seal hold a 3 m (10-ft.) column of water for 24 hours without leaking.



PHYSICAL DATA

The data below is constant for all OMG Scupper RetroDrains.

DRAIN BODY		SEAL	
2 mm (.080") thick aluminium		U-Flow Mechanical Seals require a U-Flow Screwdriver for installation.	
FLANGE		STRAINER DOME	
400 mm x 255 mm x 255 mm (16" x 10" x 10")		1.5 mm (.060") thick aluminium	
STEM		CLAMP RING	
254 mm (10") length		3.2 mm (.125") thick metal	

ORDERING INFORMATION

CAT. NO.	SIZE MM (IN)	STRAINER TYPE	PKG QTY	DIMENSIONAL WEIGHT KGS (LBS)
SCUPRD3-UF	75 (3)	Aluminium	1	14.5 (32)
SCUPRD4-UF	100 (4)	Aluminium	1	14.5 (32)
SCUPRD5-UF	125 (5)	Aluminium	1	14.5 (32)
SCUPRD6-UF	150 (6)	Aluminium	1	14.5 (32)



ROOFING PRODUCTS

153 BOWLES ROAD,
AGAWAM, MA 01001 USA
+1 413.789.0252
INFOEUROPE@OLYFAST.COM
WWW.OMGROOFING.COM

Superior productivity. Superior performance.

Europe Market Manager:
Lennard Spirig
LSpirig@olyfast.com
Mob: +41 79 200 19 30
Office: +41 71 599 19 30

Benelux:
Ruud Veldwijk
RVeldwijk@olyfast.com
Mob: +31 6 28376030

United Kingdom:
Mick Steeples
MSteeple@olyfast.com
Mob: +44 7824 364850

OlyFlow™ is a trademark of OMG, Inc. Copyright © 2019 OMG, Inc. All rights reserved.

