



Hercules® RetroDrain®

PRODUCT DATA SPECIFICATIONS

PRODUCT DESCRIPTION

Hercules RetroDrains have a one-piece spun aluminum body, heavy-duty cast aluminum strainer dome, and clamping ring for strength and durability. The Hercules RetroDrain incorporates U-Flow® Seal technology for a mechanical watertight connection to PVC or cast iron pipes to prevent water from backup damage. Available in 3-, 4-, 5- and 6-in. sizes. Hercules RetroDrains, the industry's most popular retrofit drain, are available with a variety of options to support any project, including TPO or PVC coated flange for direct membrane attachment or copper stem and flange for more corrosive environments.

FEATURES & BENEFITS

- One-piece seamless body provides strength and durability without separation of the flange from the stem.
- Extra-large 17.5-in. flange allows positive attachment of roof flashing membrane while the sump area facilitates drainage.
- Cast aluminum strainer dome and clamping ring. (Clamping ring not used with TPO or PVC coated drains).
- 12-in. long drain stem accommodates most existing field conditions with longer lengths available.
- Saves time and money by allowing easy installation from the rooftop without disturbing occupants.
- Cast aluminum SuperDome® available with flip top lid for easy cleaning.

APPROVALS & STANDARDS

ANSI/SPRI RD-1 – is a national performance standard for retrofit roof drains. While most drains are not tested to this standard, Hercules RetroDrains exceed the standard, which requires the seal to hold a 10-ft. column of water for 24 hours without leaking.



ULC/ORD-C790.4 – developed by Underwriters' Laboratories of Canada and features a test protocol designed to assure a leak-free connection to existing plumbing and impact testing to provide strength.



PHYSICAL DATA

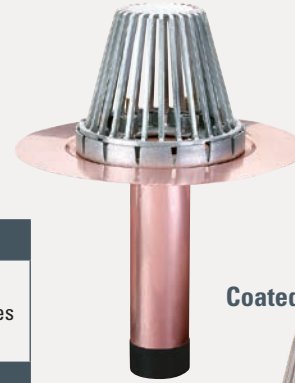
The data below is constant for each Hercules RetroDrain.

DRAIN BODY		SEAL	
11 Ga. (.125") spun aluminum		Watertight U-Flow mechanical seal requires U-Flow screwdriver	
FLANGE		STRAINER DOME	
17½" diameter with sump area		Cast aluminum	
STEM		CLAMP RING	
12" length		Cast aluminum or thermoplastic coated	

Hercules



Copper Hercules



Hercules Coated for PVC or TPO



ORDERING INFORMATION

PRODUCT	CAT. NO.	DOMES TYPE	PKG QTY	WEIGHT LBS
3-in. Hercules	HDAL3A	Aluminum	1	27
4-in. Hercules	HDAL4A	Aluminum	1	27
5-in. Hercules	HDAL5A	Aluminum	1	27
6-in. Hercules	HDAL6A	Aluminum	1	27
3-in. Hercules (TPO Coated Flange)	HDTPO3A	Aluminum	1	27
4-in. Hercules (TPO Coated Flange)	HDTPO4A	Aluminum	1	27
5-in. Hercules (TPO Coated Flange)	HDTPO5A	Aluminum	1	27
6-in. Hercules (TPO Coated Flange)	HDTPO6A	Aluminum	1	27
3-in. Hercules (PVC Coated Flange)	HDPVC3A	Aluminum	1	27
4-in. Hercules (PVC Coated Flange)	HDPVC4A	Aluminum	1	27
5-in. Hercules (PVC Coated Flange)	HDPVC5A	Aluminum	1	27
6-in. Hercules (PVC Coated Flange)	HDPVC6A	Aluminum	1	27
3-in. Hercules (Copper)	HDCU3A	Aluminum	1	27
4-in. Hercules (Copper)	HDCU4A	Aluminum	1	27
5-in. Hercules (Copper)	HDCU5A	Aluminum	1	27
6-in. Hercules (Copper)	HDCU6A	Aluminum	1	27



Hercules® RetroDrain®

INSTALLATION PROCEDURE

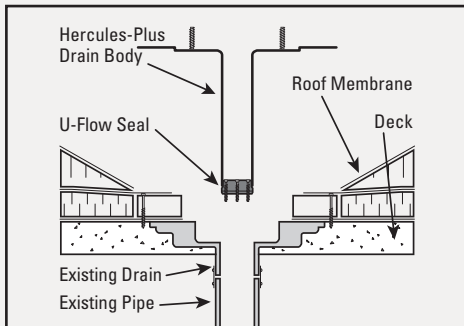
FOR USE WITH

All types of roof covers.

JOB PREPARATION

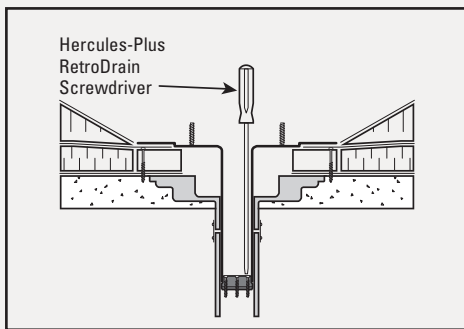
Remove existing strainer dome and clamping ring. Remove other existing drain components as required to enable Hercules Drain flange to lie flush on roof membrane. Remove any debris or constricting materials in the existing drain pipe that interferes with proper installation.

STEP 1



Examine the existing water leader to make sure there are no elbows that prevent the drain stem from being fully inserted into the pipe. Insert U-Flow® Seal into end of drain stem and tighten screws enough to hold the seal in place during installation. Insert assembled drain into existing leader pipe until flange lies flush on roof membrane.

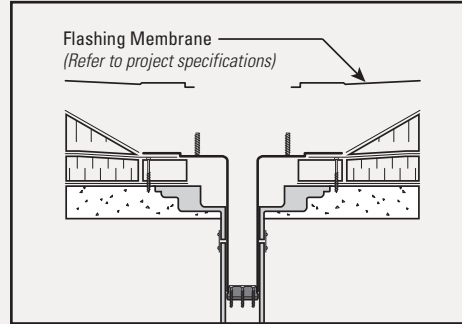
STEP 2



Alternately tighten seal compression ring screws with U-Flow Screwdriver until hand tight.

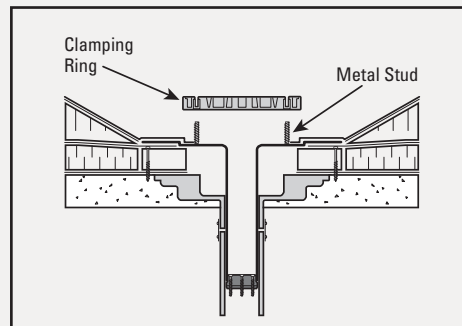
Hercules-Plus is correctly installed when pressure placed on drain body results in no vertical movement. Do not overtighten the screws.

STEP 3



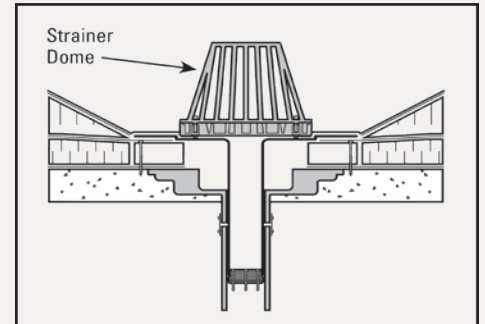
Secure the drain flange to the roof deck/nailer using a minimum of three pan-head fasteners, evenly spaced around the flange. The flashing membrane must cover and extend past the fastener head. Flashing membrane must be installed per roof membrane manufacturer's detail. For TPO/PVC coated flange, hot air weld the flashing membrane to the drain flange.

STEP 4



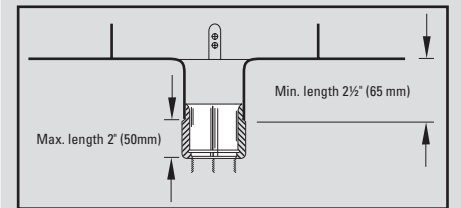
Place clamping ring over metal studs. Install stainless steel nut and lock washers tightening clamping ring against membrane flashing until secure.

STEP 5



Install strainer dome by aligning screw holes with the holes in the clamping ring. Secure with screws provided.

HOW TO SHORTEN AN OLYFLOW® RETROFIT DRAIN



Make sure there is at least 4-in. of clear vertical distance in the existing pipe to accommodate the drain. Cut drain stem to desired length and insert U-Flow Seal. Note: Leave at least 2.5-in. of the drain stem to accommodate the seal.

Insert the U-Flow Seal in the cut drain stem and tighten the seal screws. Once the drain and seal have been assembled, insert it into the existing water leader and complete the assembly following installation steps 2 thru 5.

For technical assistance contact OMG at 800-633-3800.



ROOFING PRODUCTS

153 BOWLES ROAD, AGAWAM, MA 01001 USA

800-633-3800 413-789-0252 OMGROOFING.COM

Hercules®, RetroDrain®, OlyFlow®, SuperDome® and U-Flow® are trademarks of OMG, Inc. Copyright © 2018 OMG, Inc. All rights reserved.

Superior productivity.
Superior performance.

